



**Town of West Newbury
Board of Health**

381 Main Street • (978) 363-1100 ext. 118 or ext. 119

as contracted to

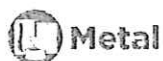
G. Mello Disposal Corp.

95 Tenney Street, Georgetown, MA • (978) 352-8581

CURBSIDE COLLECTION at a Glance

Unsure about what you can recycle?

Visit: www.recyclesmartma.org/beyond-the-bin-search



Metal



**Food and Beverage
Cans**
empty and rinse



Plastic



**Bottles, Jars, Jugs
and Tubs**
empty and replace cap



Glass



Bottles and Jars
empty and rinse



**Paper &
Cardboard**



**Mixed Paper, Newspaper,
Magazines, Boxes**
empty and flatten

NO!



**Do Not Bag Recyclables
No Garbage**



**No Plastic Bags
or Plastic Wrap**
(return to retail)



No Food or Liquid
(empty all containers)



No Clothing or Linens
(use donation programs)



No Tangles
(no hoses, wires,
chains or electronics)



AN INITIATIVE OF
THE MASSACHUSETTS
DEPARTMENT OF
ENVIRONMENTAL
PROTECTION

RecycleSmartMA.org



@RecycleSmartMA



RecycleSmartMA



Recycle-Smart-MA

Have questions? Visit our website: www.wnewbury.org/board-health

RECYCLING Please NO PLASTIC BAGS and NO GIFT WRAP. With single stream recycling, we send our materials to a processing facility using an automated system to sort and bale recyclables. Plastic bags jam the automated machinery. Most grocery stores collect used plastic shopping bags for recycling. The "chasing arrow" symbol with a number inside (Resin Code) does not always mean recyclable.

TRASH Items left outside of barrel will not be collected.

HOLIDAY SCHEDULE Observed Holidays in 2024 are: New Year's Day, Memorial Day, July 4th, Labor Day, Thanksgiving Day, and Christmas Day. If your pickup day is on the Holiday (H) or after, your pickup will be delayed one (1) day that week.

COLLECTION SCHEDULE Recycling barrels are collected every other week on your regular trash collection day. All recycling materials are collected during weeks highlighted on the calendar below.

BULK ITEM SCHEDULE There will be six (6) collections during the year. Please call (978) 363-1100 x141 to make arrangements.

COLLECTION SCHEDULE - 2024 - COLLECTION SCHEDULE																															
JANUARY							FEBRUARY							MARCH							APRIL										
S	M	T	W	T	F	S	S	M	T	W	T	F	S	S	M	T	W	T	F	S	S	M	T	W	T	F	S				
	(H)	2	3	4	5	6						1	2	3					1	2					1	2	3	4	5	6	
7	8	9	10	11	12	13	4	5	6	7	8	9	10	3	4	5	6	7	8	9	7	8	9	10	11	12	13				
14	15	16	17	18	19	20	11	12	13	14	15	16	17	10	11	12	13	14	15	16	14	15	16	17	18	19	20				
21	22	23	24	25	26	27	18	19	20	21	22	23	24	17	18	19	20	21	22	23	21	22	23	24	25	26	27				
28	29	30	31				25	26	27	28	29			31							28	29	30								
MAY							JUNE							JULY							AUGUST										
S	M	T	W	T	F	S	S	M	T	W	T	F	S	S	M	T	W	T	F	S	S	M	T	W	T	F	S				
			1	2	3	4							1		1	2	3	(H)	5	6						1	2	3			
5	6	7	8	9	10	11	2	3	4	5	6	7	8	7	8	9	10	11	12	13	4	5	6	7	8	9	10				
12	13	14	15	16	17	18	9	10	11	12	13	14	15	14	15	16	17	18	19	20	11	12	13	14	15	16	17				
19	20	21	22	23	24	25	16	17	18	19	20	21	22	21	22	23	24	25	26	27	18	19	20	21	22	23	24				
26	(H)	28	29	30	31		23	24	25	26	27	28	29	28	29	30	31				25	26	27	28	29	30	31				
30																															
SEPTEMBER							OCTOBER							NOVEMBER							DECEMBER										
S	M	T	W	T	F	S	S	M	T	W	T	F	S	S	M	T	W	T	F	S	S	M	T	W	T	F	S				
1	(H)	3	4	5	6	7			1	2	3	4	5						1	2	1	2	3	4	5	6	7				
8	9	10	11	12	13	14	6	7	8	9	10	11	12	3	4	5	6	7	8	9	8	9	10	11	12	13	14				
15	16	17	18	19	20	21	13	14	15	16	17	18	19	10	11	12	13	14	15	16	15	16	17	18	19	20	21				
22	23	24	25	26	27	28	20	21	22	23	24	25	26	17	18	19	20	21	22	23	22	23	24	(H)	26	27	28				
29	30						27	28	29	30	31			24	25	26	27	(H)	29	30	29	30	31								

Recycling Tips and Information

In January 1997, West Newbury instituted a curbside recycling program. This state mandatory ordinance asks that the citizens of the community participate in the process which saves the environment from pollution of incineration and land filling. This information sheet is to aid you in preparing your barrels for curbside pickup, and to provide you with additional recycling information.

When and Where?: Barrels should be placed curbside by 6:00 a.m. with the hinge side away from the street with three (3) feet between the barrels and at least four (4) feet from obstructions.

Plastic Bags: NO PLASTIC BAGS should be used in preparing the recycling barrel for curbside collection.

Cardboard: MUST be broken down to a size that fits into your recycling barrel for curbside collection or can be brought to *Pipestave Hill Recycling Center*.

Clean Barrels: Items in recycling barrel should be clean from all food contamination.

The Pipestave Hill Recycling Drop-Off Center Gate will be open and manned on Saturdays from 8 a.m. to 12 p.m. Walk-in available during week from dawn to dusk.

What if I have other questions on recycling?: Call the *Board of Health* at (978) 363-1100, ext. 118 or 119

Pipestave Hill Recycling Area Rules - VIOLATORS WILL BE FINED

Recycling material must be sorted.

- GATE OPEN: 8 a.m. - 12 p.m. Saturday
- ONLY WEST NEWBURY RESIDENTS may use this facility.
- Residents may drop-off metal appliances as well as bottles, cans, cardboard, and paper (must be sorted).
- NO material collected outside of West Newbury will be permitted.
- NO household trash permitted.
- NO propane tanks permitted.
- NO plastic bags.
- NO styrofoam.
- NO furniture permitted.
- NO demolition material permitted.
- NO hazardous material permitted (oil paint, paint thinner, pesticides, etc.).
- NO fluorescent light bulbs.
- NO yard waste.
- NO TV's or computers.
- NO tires.

G. MELLO DISPOSAL SERVICES

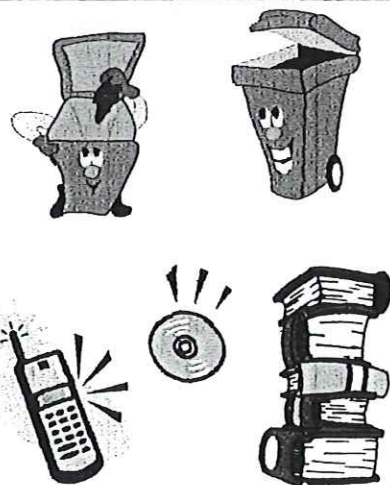
Transfer station is located on Route 133 in Georgetown, one mile west of Route 95, and is open to all residents of West Newbury. Please call (978) 352-8581 for hours and any questions.

Waste & Recycling Programs

Beginning January 1st, 2021 mattresses and box springs are prohibited from curbside trash collection. The state of Massachusetts is now mandating these items to be recycled. West Newbury has teamed up with Newburyport and is offering a recycling program at the *City of Newburyport's Recycling Center*, 23 Colby Farm Lane. Please contact *City of Newburyport Recycling Center* for pricing and to confirm they are accepting items in advance of your visit. (978) 499-0413.

Other special and hazardous recycling programs include: Cell phones, Ni-Cad, rechargeable and button batteries. All items containing mercury, medical sharps/needles and syringes, fluorescent light bulbs and tubes, books/CD's/ DVD's, and textiles.

Call the Board of Health to drop off items. (978) 363-1100, ext. 118 or 119



Single Stream Recycling

West Newbury Board of Health

What is Single Stream Recycling?

Single stream recycling allows you to place all recyclable items in your bin or container as long as they are properly prepared. Materials are sent to a processing facility using an automated system to sort and bale recyclables. Please do not use plastic bags, they will jam the automated machinery. Help us by doing your part to prepare your recyclables and educate yourself on what is recyclable and what is not.

Cardboard: Corrugated, shipping boxes, dry-food boxes, egg cartons, file folders, cardboard cups. NO waxed cardboard juice boxes or milk cartons. NO pizza boxes with food residue or grease stains .

Plastic: Plastic Containers #1-#7 such as milk jugs, yogurt cups, clear egg cartons, water, juice, soda bottles. Leave caps/lids on. NO unnumbered plastic.

Paper: Office paper, newspapers, junk mail, magazines, phone books, greeting cards, soft cover books, paper bags, tissue paper, gift bags. NO paper napkins or tissues/Kleenex and NO paper plates with food residue.

Metal/Tin/Aluminum: Food cans and lids, deposit and non-deposit beverage cans (can be flattened), clean aluminum foil and foil pans, and empty aerosol cans. NO cans which contained hazardous material or paint.

Glass: Food jars, beverage bottles. NO broken glass, light bulbs, windows, auto glass, dishes, glasses or Pyrex.

*Have questions? please visit our Webpage,
www.wnewbury.org/board-health .

What is NOT recyclable?

NO items with food residue such as grease.

NO plastic bags.

NO paper napkins or tissues/Kleenex.

NO packing peanuts.

NO waxed cardboard such as juice boxes, juice/milk cartons, coffee cups.

NO clothing or linens.

NO metal hangers.

NO electronics, batteries or cell phones.

NO oil-based paint or latex paint.

NO broken glass, light bulbs, window glass, auto glass, dishes or Pyrex.

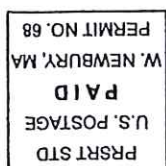
NO cans that contained hazardous material or paint.

NO metal other than food cans.

NO STYROFOAM of any kind.

NO motor oil.

West Newbury, MA 01985
Postal Customer



West Newbury Board of Health
Town Office Building
381 Main Street
West Newbury, MA 01985